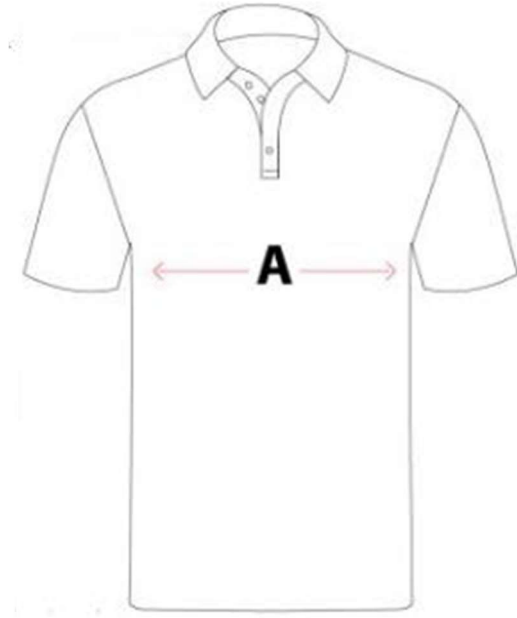


BORONIA HEIGHTS STATE SCHOOL

BHSS Uniform Sizing Guide



POLO SHIRTS



The following measurements are of the Polo from armpit to armpit while on a flat surface. Please measure your child around their chest under the

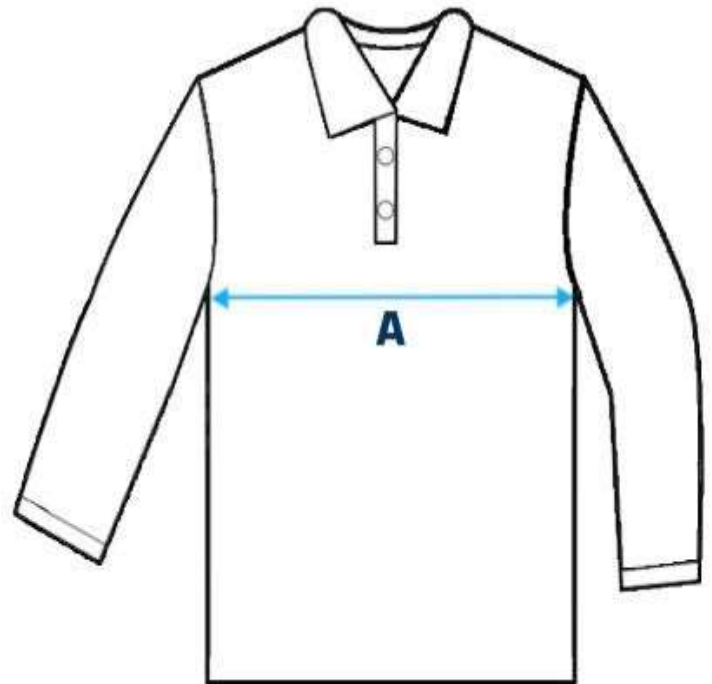
Chest (cm)	4	6	8	10	12	14
	40	43	45	47	49	51
Chest (cm)	16	18	20	22	24	26
	53	55	57	59	61	63

armpits and divide by 2 to determine the correct sizing.

LONG SLEEVE SHIRTS

The following measurements are of the Long Sleeve Shirt from armpit to armpit while on a flat surface. Please measure your child around their chest under the armpits and divide by 2 to determine the correct sizing.

Chest (cm)	6	8	10	12
	38	40	42	44
Chest (cm)	14	16	18	20
	46	48	50	52





BHSS Uniform Sizing Guide

JACKETS



The following measurements are of the jackets from armpit to armpit while on a flat surface. Please measure your child around their chest under the armpits and divide by 2 to determine the correct sizing.

Chest (cm)	4	6	8	10
	40	43	46	48
Chest (cm)	12	14	16	18
	50	52	54	56

HATS

Please measure the circumference of your child(s) head to determine the correct sizing.

52cm	54cm	55cm	57cm
------	------	------	------

SHORTS & SKIRTS

The current range in shorts and skirts are the standard children
sizing